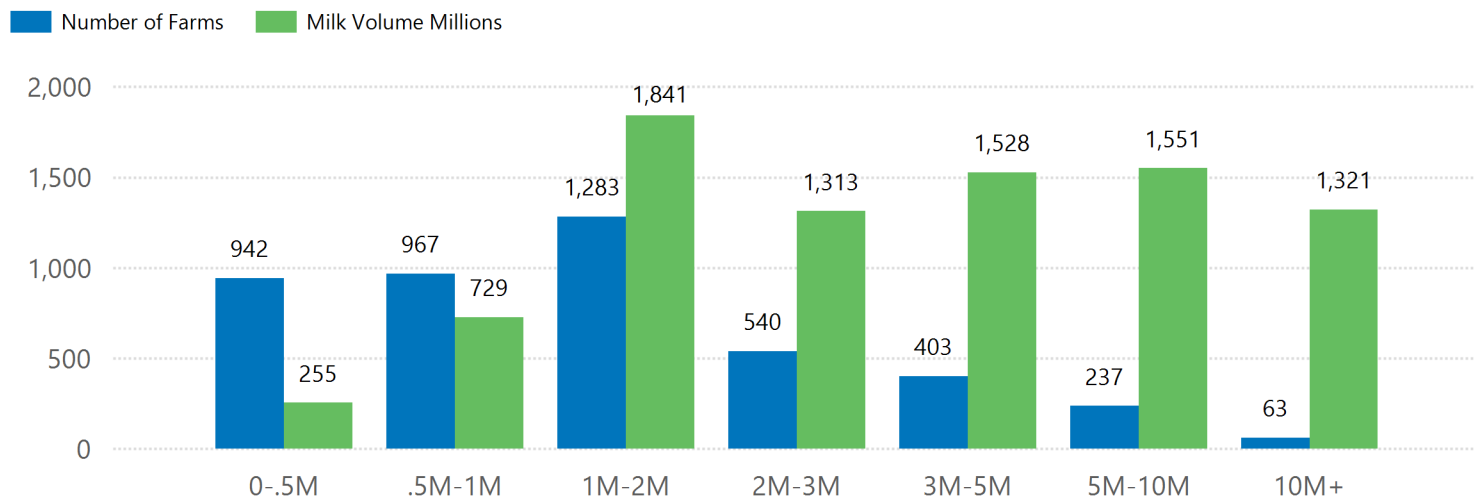


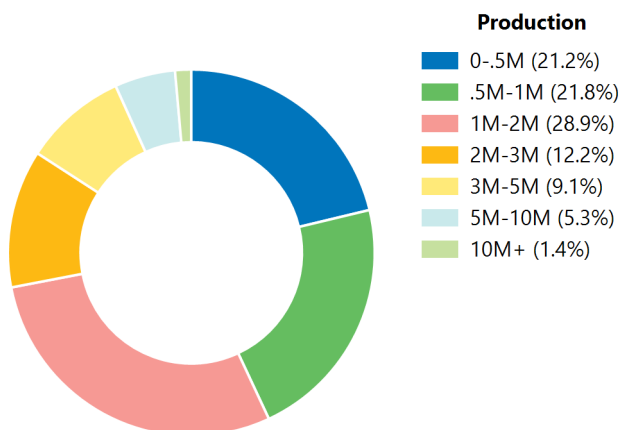
FARMS BY PRODUCTION 2022

AUSTRALIA

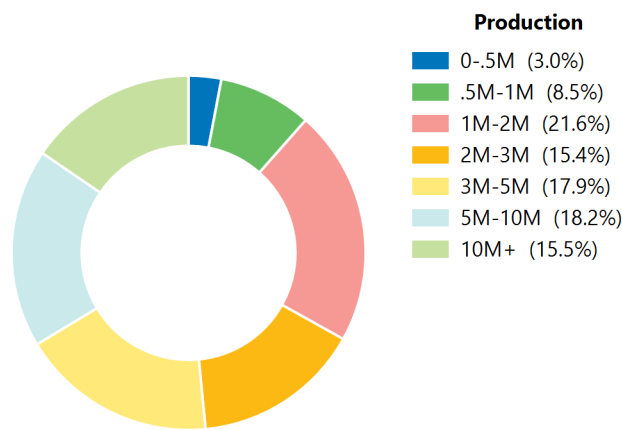
Numer of Farms/Milk Volume Millions by Production Range



Farm Makeup by Production Range



Volume Makeup by Production Range



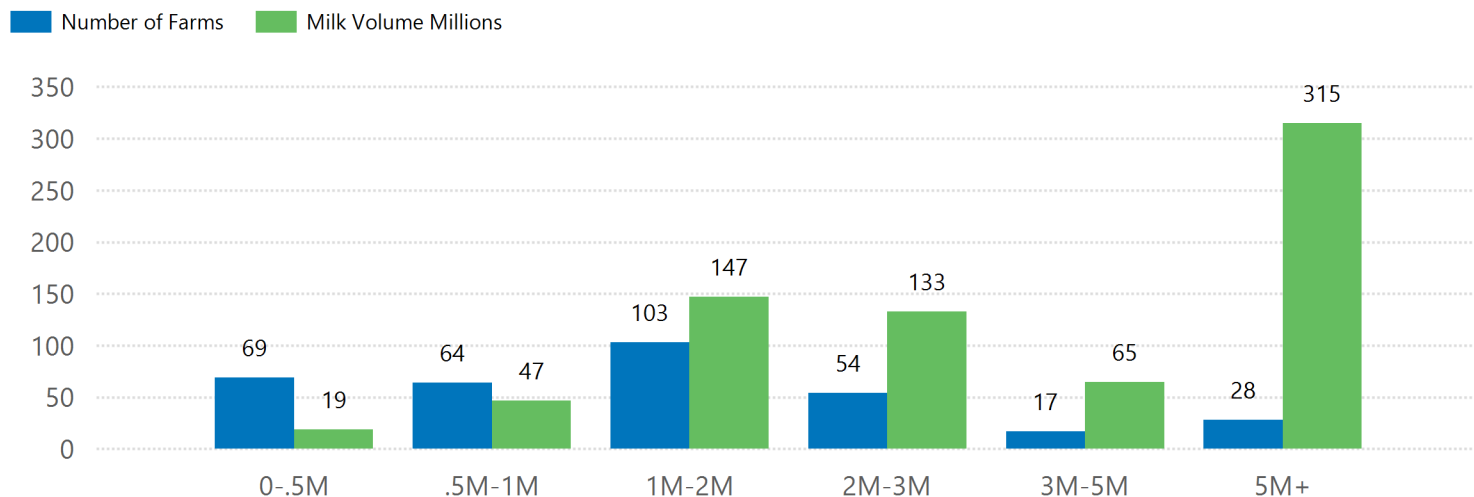
Production	Number of Farms by Year				
	2018	2019	2020	2021	2022
0-.5M	1,272	1,232	1,069	936	942
.5M-1M	1,307	1,209	1,040	1,008	967
1M-2M	1,555	1,444	1,354	1,350	1,283
2M-3M	631	573	539	563	540
3M-5M	441	378	405	419	403
5M-10M	205	201	214	231	237
10M+	64	62	65	73	63
Total	5,475	5,099	4,686	4,580	4,435

Production	Milk Volume Millions per Year				
	2018	2019	2020	2021	2022
0-.5M	349	334	276	262	255
.5M-1M	977	902	773	750	729
1M-2M	2,206	2,051	1,926	1,924	1,841
2M-3M	1,528	1,395	1,317	1,376	1,313
3M-5M	1,666	1,450	1,541	1,598	1,528
5M-10M	1,329	1,332	1,410	1,511	1,551
10M+	1,250	1,260	1,252	1,491	1,321
Total	9,303	8,724	8,495	8,911	8,539

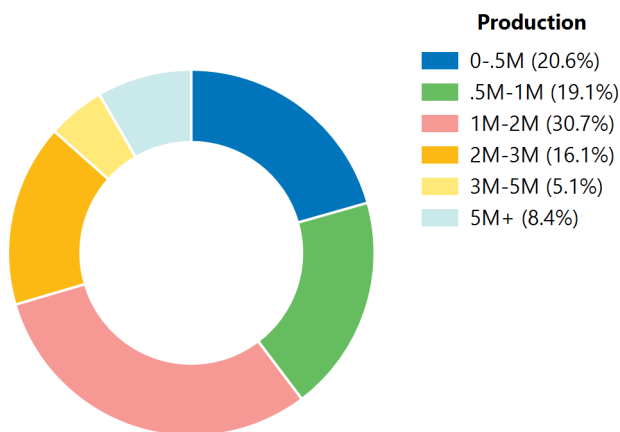
FARMS BY PRODUCTION 2022

DairyNSW

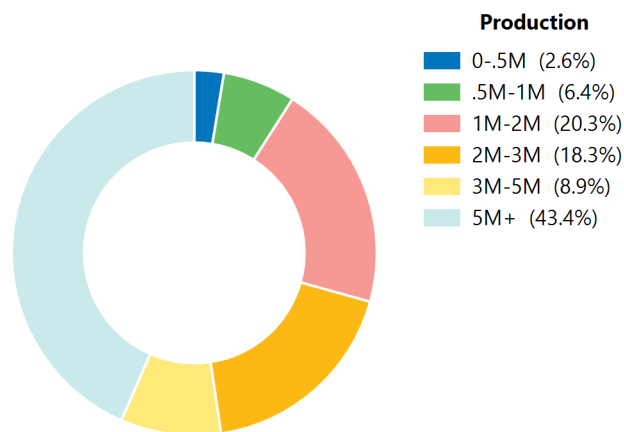
Numer of Farms/Milk Volume Millions by Production Range



Farm Makeup by Production Range



Volume Makeup by Production Range



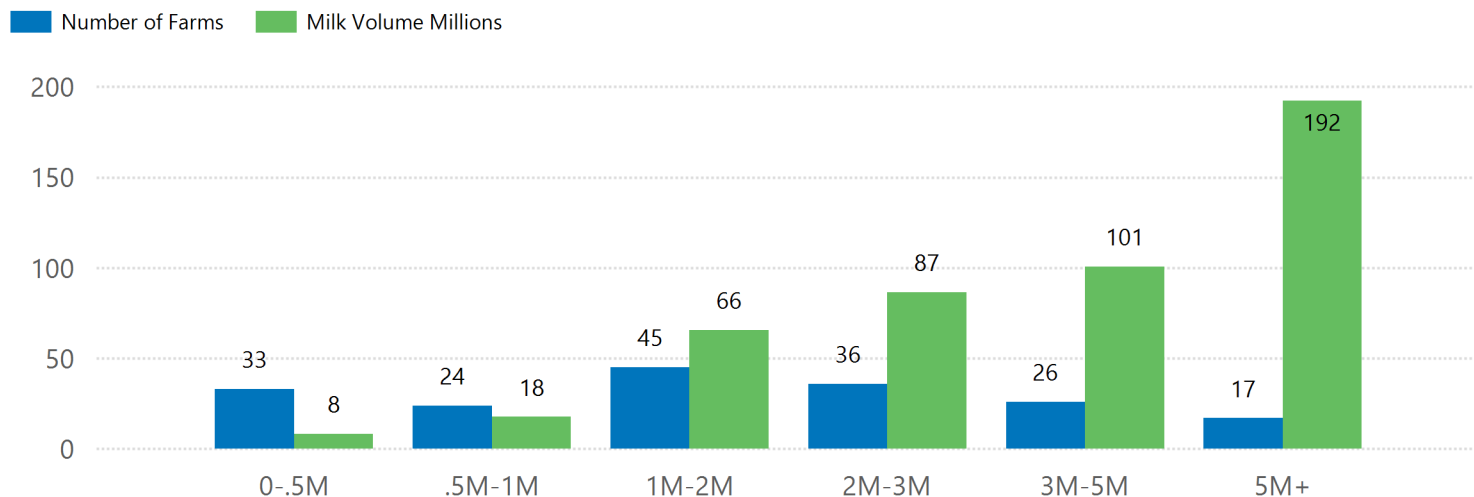
Production	Number of Farms by Year				
	2018	2019	2020	2021	2022
0-.5M	88	81	77	72	69
.5M-1M	101	85	78	65	64
1M-2M	102	102	89	103	103
2M-3M	58	52	50	49	54
3M-5M	30	22	24	22	17
5M+	24	25	20	26	28
Total	403	367	338	337	335

Production	Milk Volume Millions per Year				
	2018	2019	2020	2021	2022
0-.5M	25	23	21	22	19
.5M-1M	75	63	58	47	47
1M-2M	151	149	127	147	147
2M-3M	140	127	118	119	133
3M-5M	109	80	95	87	65
5M+	275	241	196	335	315
Total	775	682	615	756	725

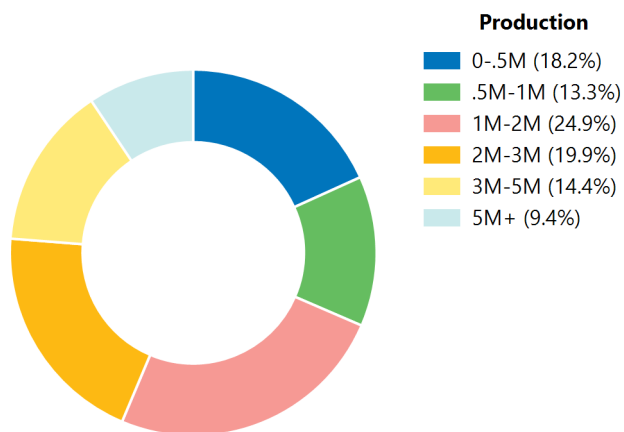
FARMS BY PRODUCTION 2022

DairySA

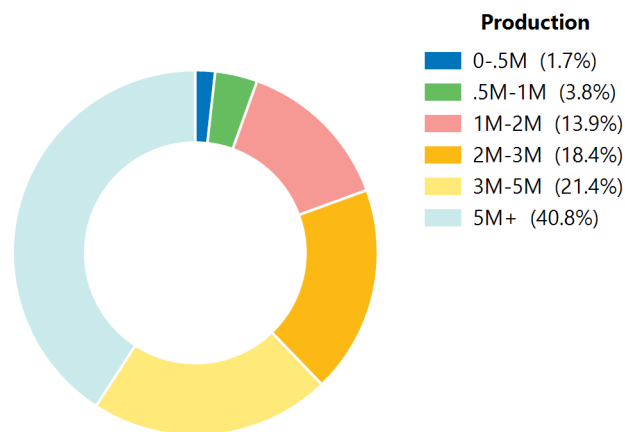
Numer of Farms/Milk Volume Millions by Production Range



Farm Makeup by Production Range



Volume Makeup by Production Range



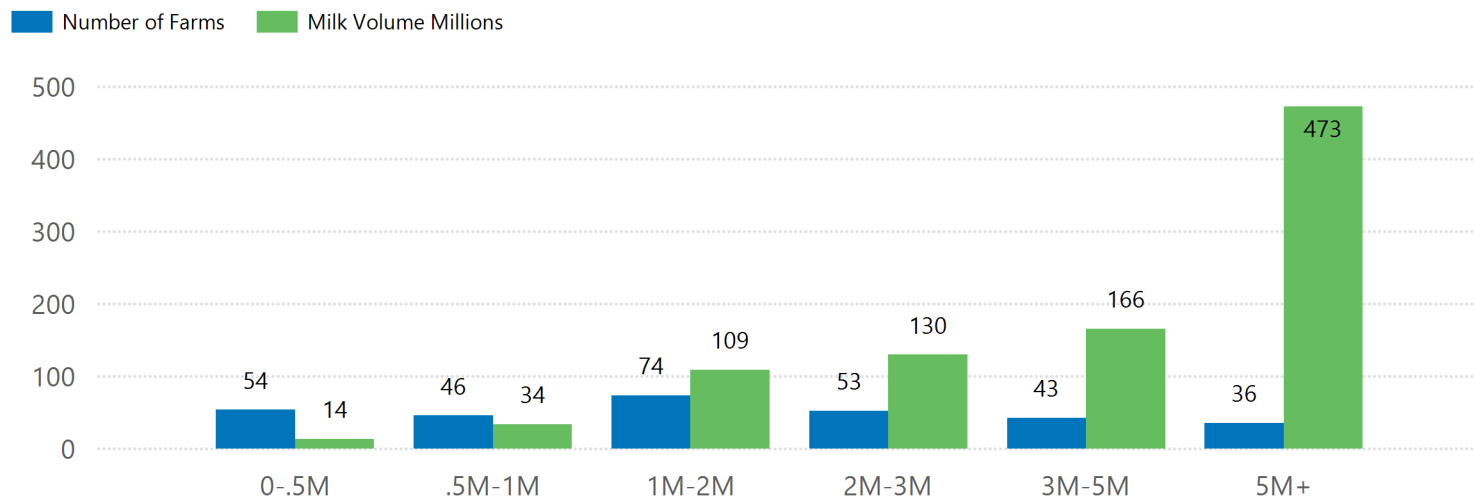
Production	Number of Farms by Year				
	2018	2019	2020	2021	2022
0-.5M	52	45	40	37	33
.5M-1M	38	34	29	28	24
1M-2M	66	62	57	53	45
2M-3M	43	32	25	34	36
3M-5M	21	24	26	26	26
5M+	21	18	19	18	17
Total	241	215	196	196	181

Production	Milk Volume Millions per Year				
	2018	2019	2020	2021	2022
0-.5M	12	11	10	10	8
.5M-1M	28	26	22	20	18
1M-2M	97	92	86	79	66
2M-3M	102	76	59	80	87
3M-5M	79	90	99	96	101
5M+	198	189	198	193	192
Total	516	485	473	478	471

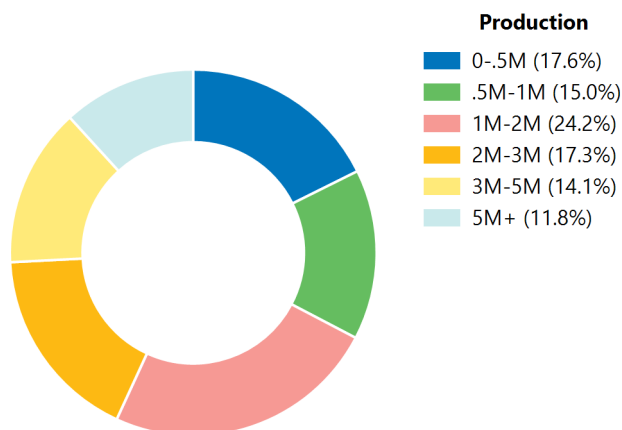
FARMS BY PRODUCTION 2022

DairyTAS

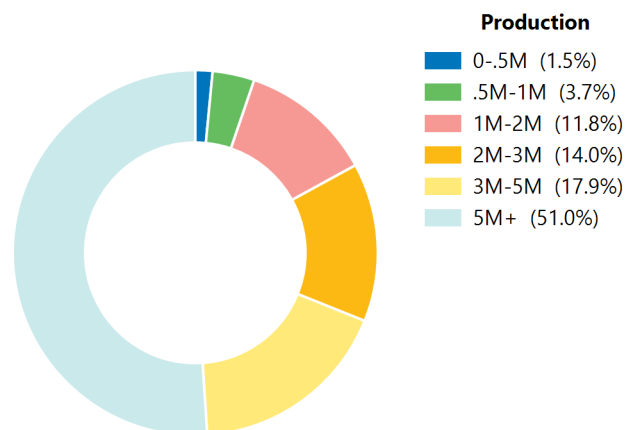
Numer of Farms/Milk Volume Millions by Production Range



Farm Makeup by Production Range



Volume Makeup by Production Range



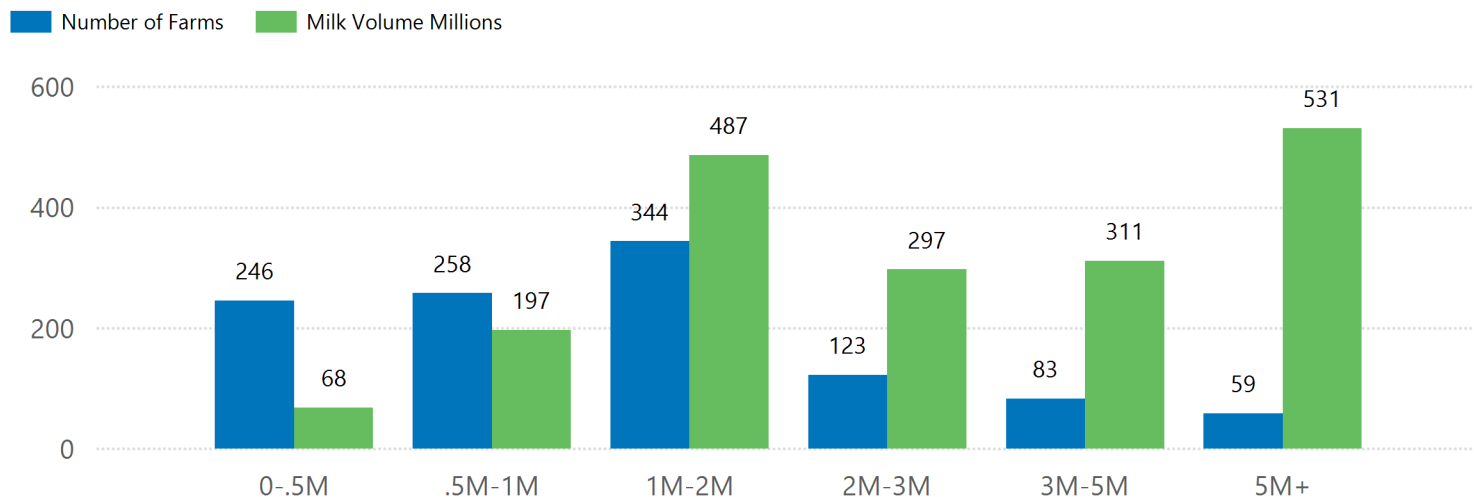
Production	Number of Farms by Year				
	2018	2019	2020	2021	2022
0-.5M	65	48	49	57	54
.5M-1M	72	68	44	46	46
1M-2M	87	83	85	69	74
2M-3M	65	59	55	56	53
3M-5M	47	47	48	54	43
5M+	34	31	39	36	36
Total	370	336	320	318	306

Production	Milk Volume Millions per Year				
	2018	2019	2020	2021	2022
0-.5M	17	14	12	15	14
.5M-1M	53	50	32	36	34
1M-2M	118	114	119	98	109
2M-3M	160	145	137	137	130
3M-5M	180	183	184	206	166
5M+	375	401	483	494	473
Total	904	907	967	987	927

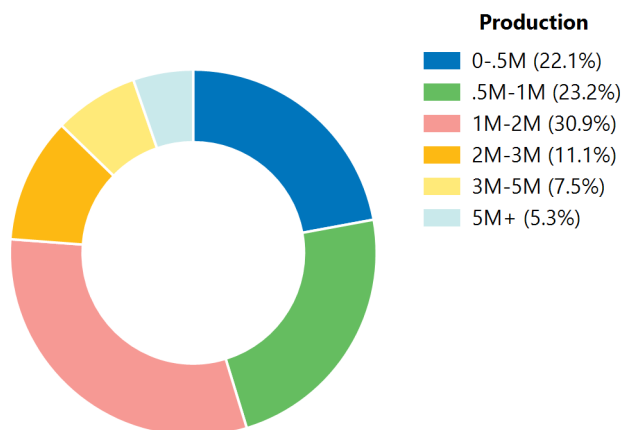
FARMS BY PRODUCTION 2022

GippsDairy

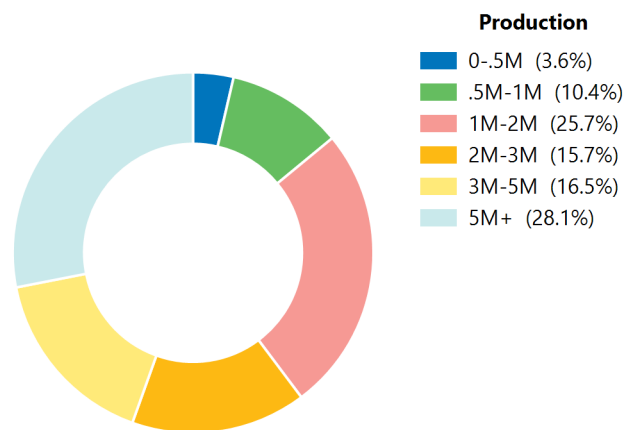
Numer of Farms/Milk Volume Millions by Production Range



Farm Makeup by Production Range



Volume Makeup by Production Range



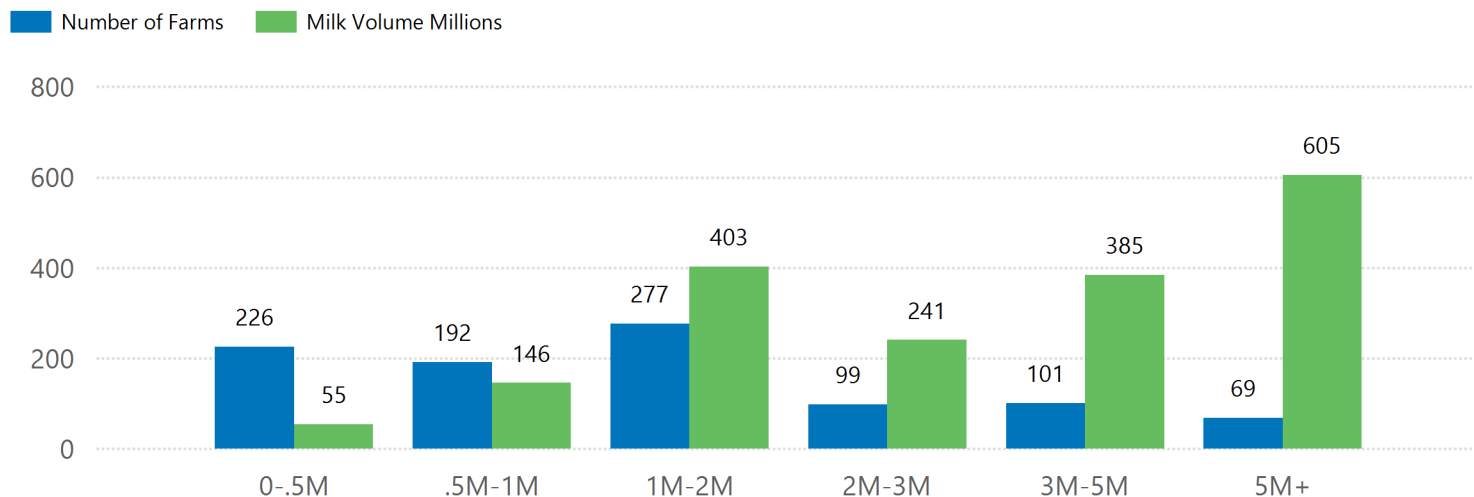
Production	Number of Farms by Year				
	2018	2019	2020	2021	2022
0-.5M	329	324	268	238	246
.5M-1M	338	315	277	269	258
1M-2M	392	358	351	370	344
2M-3M	128	118	113	131	123
3M-5M	78	67	83	79	83
5M+	54	52	60	62	59
Total	1,319	1,234	1,152	1,149	1,113

Production	Milk Volume Millions per Year				
	2018	2019	2020	2021	2022
0-.5M	89	89	71	68	68
.5M-1M	250	234	203	200	197
1M-2M	557	506	501	518	487
2M-3M	313	285	276	323	297
3M-5M	294	255	310	300	311
5M+	584	570	614	577	531
Total	2,088	1,939	1,975	1,986	1,892

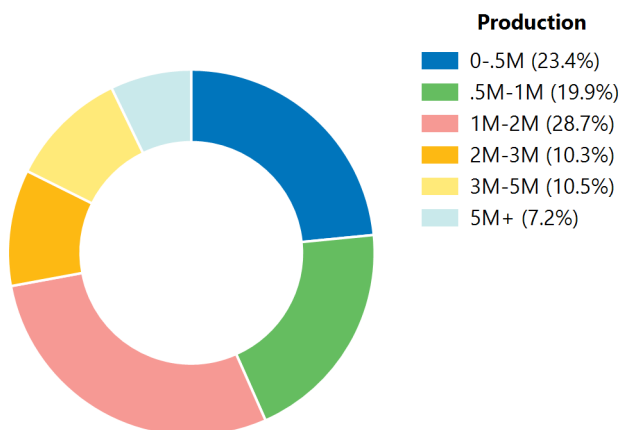
FARMS BY PRODUCTION 2022

Murray Dairy

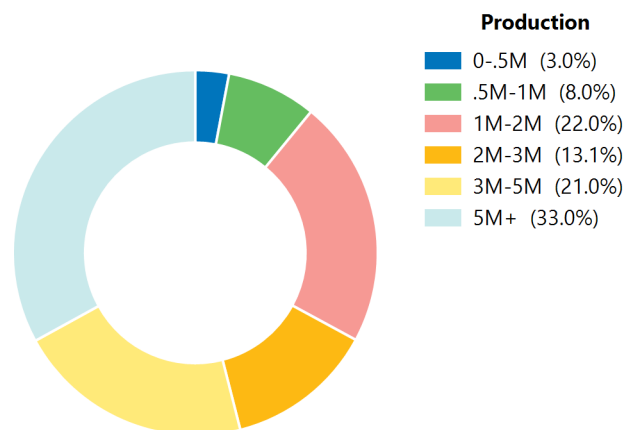
Numer of Farms/Milk Volume Millions by Production Range



Farm Makeup by Production Range



Volume Makeup by Production Range



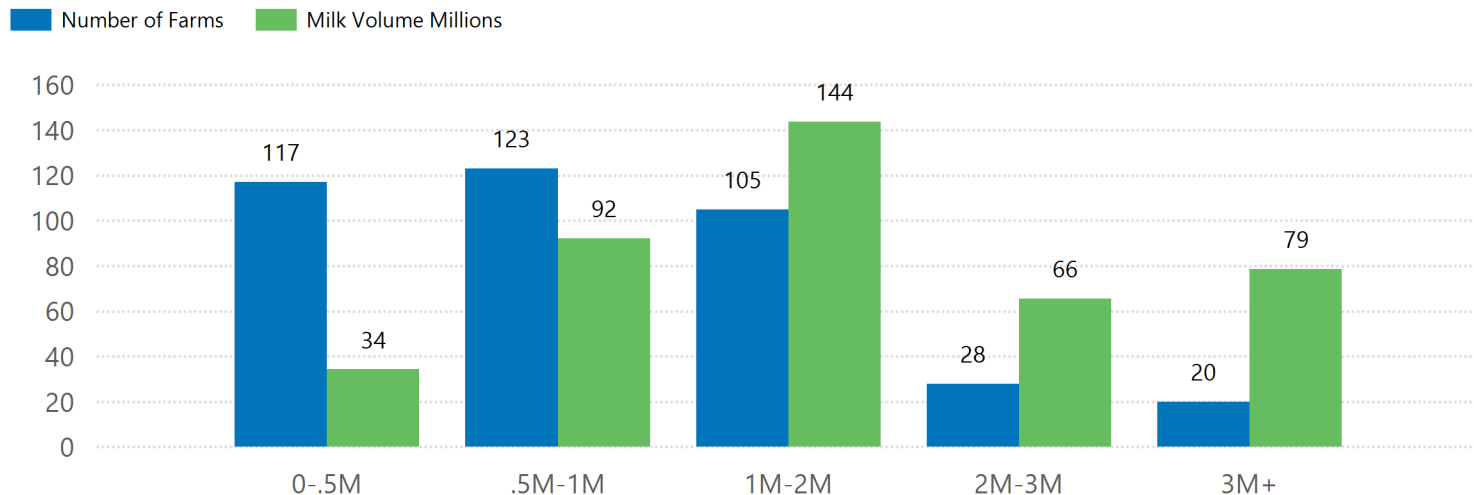
Production	Number of Farms by Year				
	2018	2019	2020	2021	2022
0-.5M	309	323	249	228	226
.5M-1M	268	253	205	189	192
1M-2M	377	334	306	292	277
2M-3M	136	121	105	95	99
3M-5M	126	94	96	105	101
5M+	59	63	62	74	69
Total	1,275	1,188	1,023	983	964

Production	Milk Volume Millions per Year				
	2018	2019	2020	2021	2022
0-.5M	82	81	60	59	55
.5M-1M	206	191	155	142	146
1M-2M	531	479	435	418	403
2M-3M	327	298	259	230	241
3M-5M	473	361	362	401	385
5M+	485	545	484	641	605
Total	2,103	1,955	1,754	1,891	1,833

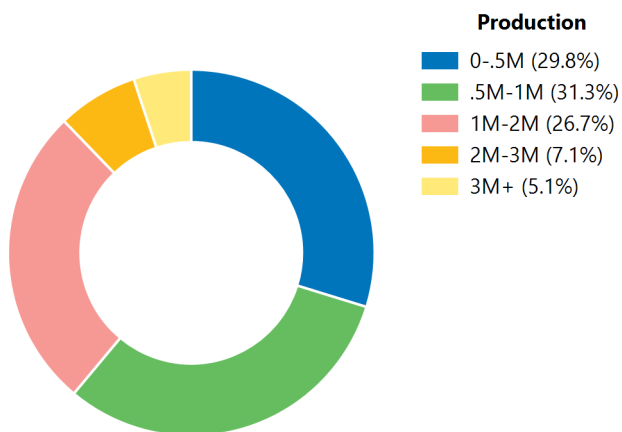
FARMS BY PRODUCTION 2022

Subtropical Dairy

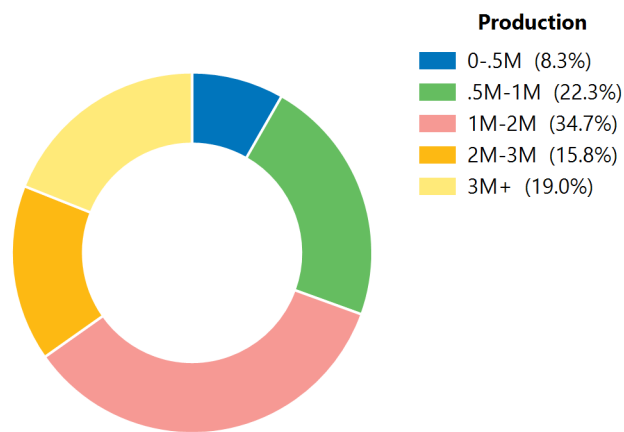
Numer of Farms/Milk Volume Millions by Production Range



Farm Makeup by Production Range



Volume Makeup by Production Range



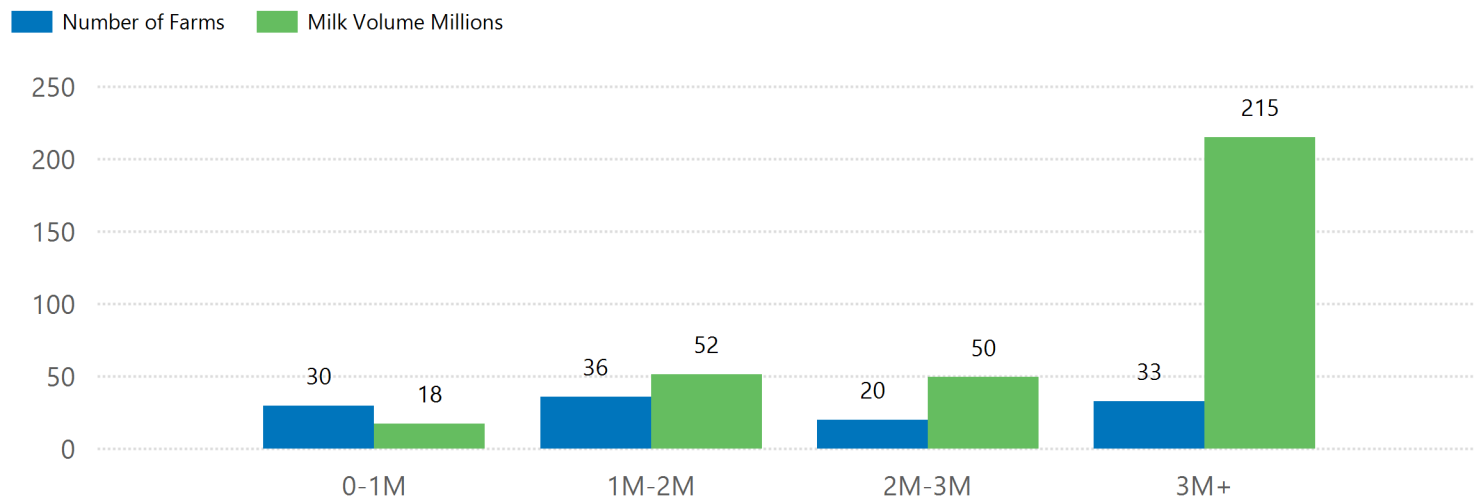
Production	Number of Farms by Year				
	2018	2019	2020	2021	2022
0-.5M	156	157	160	120	117
.5M-1M	157	142	125	133	123
1M-2M	139	127	110	111	105
2M-3M	31	33	30	32	28
3M+	25	17	15	18	20
Total	508	476	440	414	393

Production	Milk Volume Millions per Year				
	2018	2019	2020	2021	2022
0-.5M	48	44	43	36	34
.5M-1M	116	104	94	99	92
1M-2M	195	176	155	155	144
2M-3M	75	82	74	79	66
3M+	100	69	61	73	79
Total	535	476	427	441	414

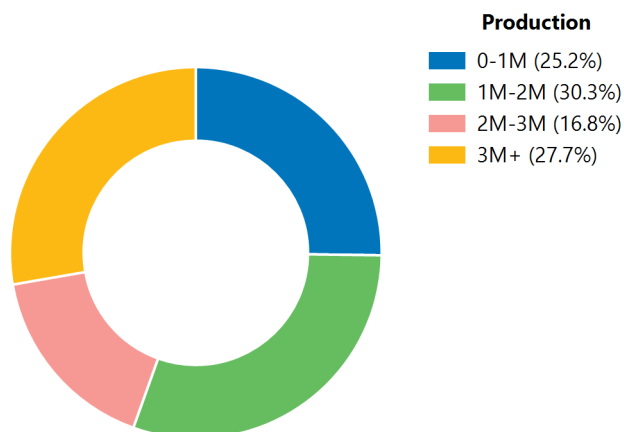
FARMS BY PRODUCTION 2022

Western Dairy

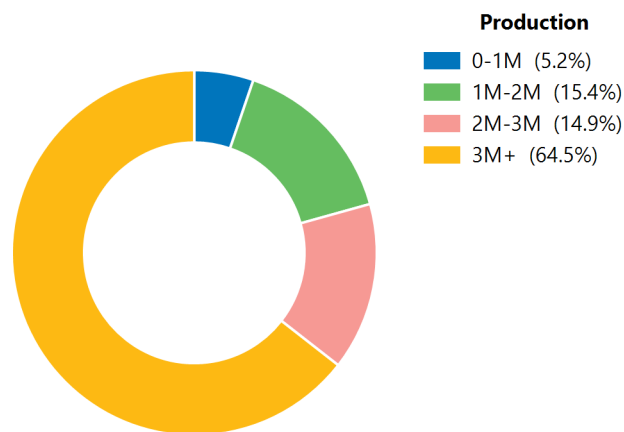
Numer of Farms/Milk Volume Millions by Production Range



Farm Makeup by Production Range



Volume Makeup by Production Range



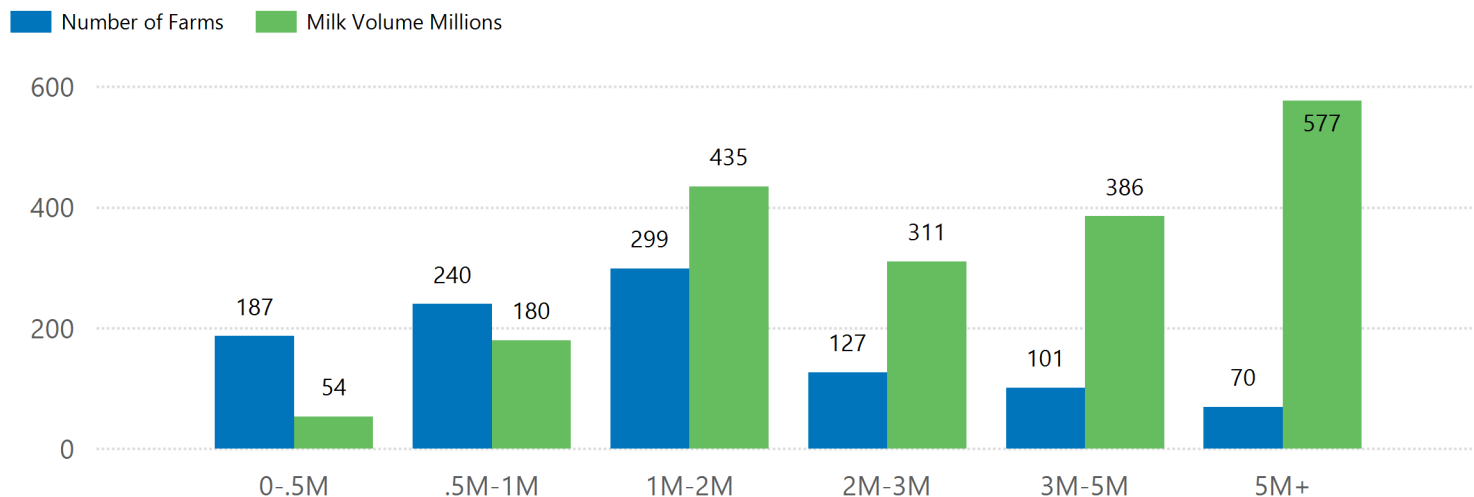
Production	Number of Farms by Year				
	2018	2019	2020	2021	2022
0-1M	41	41	38	31	30
1M-2M	37	37	37	39	36
2M-3M	30	30	28	22	20
3M+	34	32	30	33	33
Total	142	140	133	125	119

Production	Milk Volume Millions per Year				
	2018	2019	2020	2021	2022
0-1M	25	23	22	18	18
1M-2M	54	54	53	57	52
2M-3M	75	73	69	56	50
3M+	228	219	210	218	215
Total	382	369	354	349	334

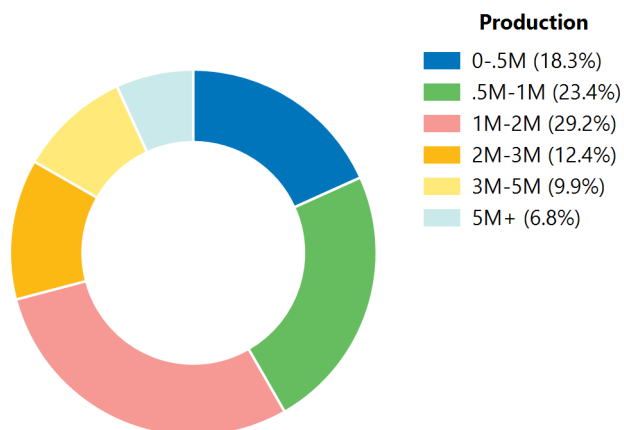
FARMS BY PRODUCTION 2022

WestVic Dairy

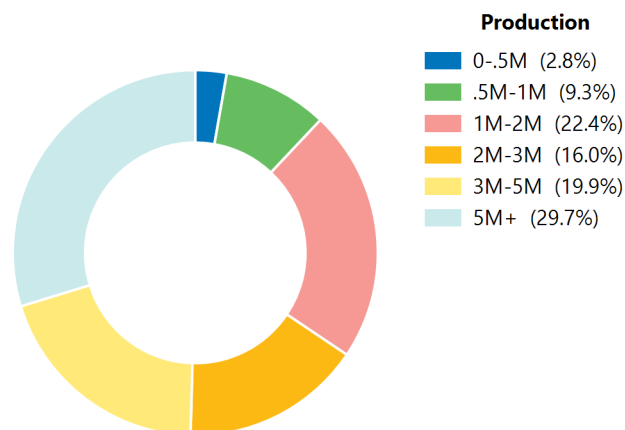
Numer of Farms/Milk Volume Millions by Production Range



Farm Makeup by Production Range



Volume Makeup by Production Range



Production	Number of Farms by Year				
	2018	2019	2020	2021	2022
0-.5M	260	235	211	172	187
.5M-1M	305	290	259	259	240
1M-2M	355	341	319	313	299
2M-3M	140	128	133	144	127
3M-5M	103	97	102	103	101
5M+	54	52	60	67	70
Total	1,217	1,143	1,084	1,058	1,024

Production	Milk Volume Millions per Year				
	2018	2019	2020	2021	2022
0-.5M	72	67	56	49	54
.5M-1M	226	216	191	191	180
1M-2M	503	482	450	452	435
2M-3M	336	308	325	352	311
3M-5M	398	382	393	398	386
5M+	466	457	514	581	577
Total	2,001	1,912	1,930	2,024	1,941



Dairy Australia Limited ABN 60 105 227 987

Level 3, HWT Tower

40 City Road, Southbank Vic 3006 Australia

T +61 3 9694 3777 F +61 3 9694 3701

E enquiries@dairyaustralia.com.au

dairyaustralia.com.au

Disclaimer

The content of this publication is based on information available to Dairy Australia at the time of preparation. Dairy Australia does not guarantee that the content is free from errors or omissions and accepts no liability for your use of or reliance on this document. Furthermore, the information has not been prepared with your specific circumstances in mind and may not be current after the date of publication. Accordingly, you should always make your own enquiry and obtain professional advice before using or relying on the information provided in this publication.

© Dairy Australia Limited 2023. All rights reserved.