

# Victoria Milk Production

## 22/23 by Region

### (Million Litres)



		Eastern			Northern			Western			Victoria		
		21/22	22/23	Var %	21/22	22/23	Var %	21/22	22/23	Var %	21/22	22/23	Var %
July		116.4	106.4	-8.6%	116.2	114.6	-1.4%	179.3	165.4	-7.7%	411.9	386.4	-6.2%
	YTD	116.4	106.4	-8.6%	116.2	114.6	-1.4%	179.3	165.4	-7.7%	411.9	386.4	-6.2%
August		158.6	144.8	-8.7%	126.7	124.4	-1.8%	186.2	181.4	-2.6%	471.6	450.6	-4.4%
	YTD	275.0	251.3	-8.6%	242.9	239.0	-1.6%	365.5	346.7	-5.1%	883.4	837.0	-5.3%
September		206.5	189.7	-8.2%	155.8	147.2	-5.6%	202.3	190.9	-5.6%	564.7	527.7	-6.5%
	YTD	481.5	441.0	-8.4%	398.8	386.2	-3.2%	567.8	537.6	-5.3%	1,448.1	1,364.7	-5.8%
October		234.0	216.8	-7.3%	170.0	157.7	-7.2%	219.1	201.2	-8.2%	623.1	575.7	-7.6%
	YTD	715.5	657.8	-8.1%	568.7	543.8	-4.4%	786.9	738.8	-6.1%	2,071.1	1,940.4	-6.3%
November		220.4	197.8	-10.2%	162.1	142.5	-12.1%	203.9	179.0	-12.2%	586.4	519.3	-11.4%
	YTD	935.9	855.6	-8.6%	730.8	686.3	-6.1%	990.8	917.8	-7.4%	2,657.5	2,459.8	-7.4%
December		206.4	190.2	-7.9%	153.0	136.6	-10.7%	181.8	172.2	-5.3%	541.3	499.0	-7.8%
	YTD	1,142.4	1,045.8	-8.5%	883.8	822.9	-6.9%	1,172.6	1,090.0	-7.0%	3,198.8	2,958.8	-7.5%
January		169.7	159.6	-6.0%	133.6	120.0	-10.2%	141.8	143.7	1.3%	445.2	423.3	-4.9%
	YTD	1,312.1	1,205.4	-8.1%	1,017.4	942.9	-7.3%	1,314.4	1,233.7	-6.1%	3,644.0	3,382.0	-7.2%
February		132.3	121.2	-8.4%	105.3	94.9	-9.9%	110.2	107.6	-2.3%	347.8	323.7	-6.9%
	YTD	1,444.4	1,326.6	-8.2%	1,122.7	1,037.8	-7.6%	1,424.7	1,341.4	-5.8%	3,991.8	3,705.7	-7.2%
March		133.1	124.0	-6.9%	107.9	99.4	-7.8%	113.2	110.3	-2.5%	354.2	333.8	-5.8%
	YTD	1,577.6	1,450.6	-8.0%	1,230.6	1,137.2	-7.6%	1,537.9	1,451.7	-5.6%	4,346.0	4,039.5	-7.1%
April		129.0	123.7	-4.1%	116.4	105.7	-9.2%	112.0	110.6	-1.3%	357.5	340.1	-4.9%
	YTD	1,706.6	1,574.3	-7.8%	1,347.0	1,242.9	-7.7%	1,649.9	1,562.3	-5.3%	4,703.5	4,379.5	-6.9%
May		128.9	129.1	0.1%	129.2	123.4	-4.5%	131.1	135.7	3.5%	389.3	388.2	-0.3%
	YTD	1,835.6	1,703.4	-7.2%	1,476.2	1,366.3	-7.4%	1,781.0	1,698.0	-4.7%	5,092.8	4,767.7	-6.4%
June		108.7			116.2			147.0			371.9		
	YTD	1,944.3			1,592.4			1,928.0			5,464.7		
<b>Total</b>		<b>1,944.3</b>			<b>1,592.4</b>			<b>1,928.0</b>			<b>5,464.7</b>		

Produced by Trade and Strategy, Dairy Australia Limited, Source: Dairy Manufacturers

Please Note: These reports contain data based on a combination of voluntary direct reporting from processors, and data sourced from government agencies. Retrospective adjustments are possible if new or revised data is received.

# Milk production report (Litres '000s)

## Victoria

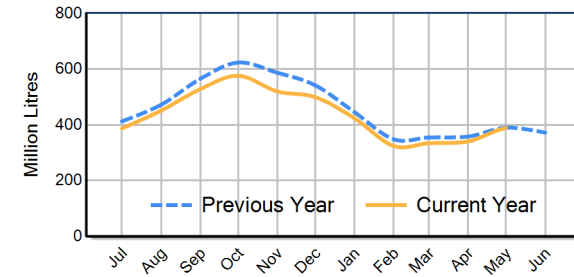


		Eastern	Northern	Western	VIC
Month	May-21	144,673	137,889	138,708	421,270
	May-22	128,933	129,235	131,146	389,315
	May-23	129,092	123,358	135,708	388,158
	<b>% change</b>	<b>0.1%</b>	<b>-4.5%</b>	<b>3.5%</b>	<b>-0.3%</b>
Region Share	May-22	33.1%	33.2%	33.7%	100.0%
	May-23	33.3%	31.8%	35.0%	100.0%
		Eastern	Northern	Western	VIC
Year To Date	2020/2021	1,903,199	1,507,922	1,833,650	5,244,771
	2021/2022	1,835,551	1,476,189	1,781,046	5,092,786
	2022/2023	1,703,421	1,366,252	1,698,022	4,767,695
	<b>% change</b>	<b>-7.2%</b>	<b>-7.4%</b>	<b>-4.7%</b>	<b>-6.4%</b>
Region Share	2021/2022	36.0%	29.0%	35.0%	100.0%
	2022/2023	35.7%	28.7%	35.6%	100.0%
		Eastern	Northern	Western	VIC
Total	2021/2022	1,944,272	1,592,407	1,928,021	5,464,700
	<b>Region Share</b>	<b>35.6%</b>	<b>29.1%</b>	<b>35.3%</b>	<b>100.0%</b>

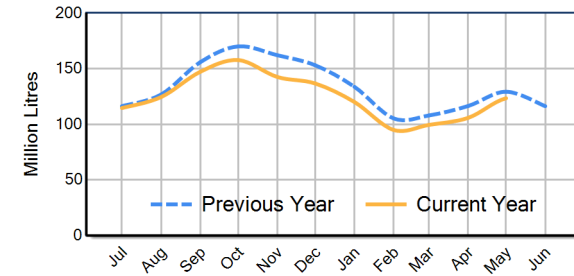
## Average Milkfat & Protein (%)

		Eastern	Northern	Western	VIC
Milkfat	May-21	4.53%	4.41%	4.39%	4.44%
	May-22	4.58%	4.41%	4.47%	4.49%
	May-23	4.55%	4.39%	4.40%	4.45%
	<b>% change 22/23</b>	<b>-0.7%</b>	<b>-0.4%</b>	<b>-1.6%</b>	<b>-0.9%</b>
		Eastern	Northern	Western	VIC
Protein	May-21	3.59%	3.45%	3.43%	3.49%
	May-22	3.59%	3.52%	3.43%	3.51%
	May-23	3.62%	3.54%	3.47%	3.55%
	<b>% change 22/23</b>	<b>1.0%</b>	<b>0.8%</b>	<b>1.3%</b>	<b>1.0%</b>

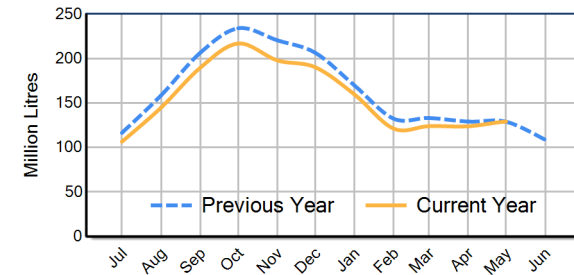
VIC Milk Production - Total Regions



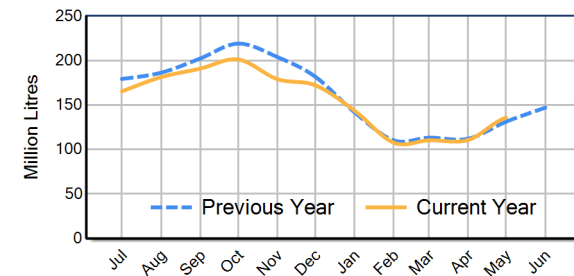
VIC Milk Production - Northern Region



VIC Milk Production - Eastern Region



VIC Milk Production - Western Region



Please note: These reports contain data based on a combination of voluntary direct reporting from processors, and data sourced from government agencies. Retrospective adjustments are possible if new or revised data is received.