

Victoria Milk Production

22/23 by Region

(Million Litres)



		Eastern			Northern			Western			Victoria		
		21/22	22/23	Var %	21/22	22/23	Var %	21/22	22/23	Var %	21/22	22/23	Var %
July		116.4	106.4	-8.6%	116.2	114.6	-1.4%	179.3	165.4	-7.7%	411.9	386.4	-6.2%
	YTD	116.4	106.4	-8.6%	116.2	114.6	-1.4%	179.3	165.4	-7.7%	411.9	386.4	-6.2%
August		158.6	144.8	-8.7%	126.7	124.4	-1.8%	186.2	181.4	-2.6%	471.6	450.6	-4.4%
	YTD	275.0	251.3	-8.6%	242.9	239.0	-1.6%	365.5	346.7	-5.1%	883.4	837.0	-5.3%
September		206.5	189.7	-8.2%	155.8	147.2	-5.6%	202.3	190.9	-5.6%	564.7	527.7	-6.5%
	YTD	481.5	441.0	-8.4%	398.8	386.2	-3.2%	567.8	537.6	-5.3%	1,448.1	1,364.7	-5.8%
October		234.0	216.8	-7.3%	170.0	157.7	-7.2%	219.1	201.2	-8.2%	623.1	575.7	-7.6%
	YTD	715.5	657.8	-8.1%	568.7	543.8	-4.4%	786.9	738.8	-6.1%	2,071.1	1,940.4	-6.3%
November		220.4	197.8	-10.2%	162.1	142.5	-12.1%	203.9	179.0	-12.2%	586.4	519.3	-11.4%
	YTD	935.9	855.6	-8.6%	730.8	686.3	-6.1%	990.8	917.8	-7.4%	2,657.5	2,459.8	-7.4%
December		206.4	190.2	-7.9%	153.0	136.6	-10.7%	181.8	172.2	-5.3%	541.3	499.0	-7.8%
	YTD	1,142.4	1,045.8	-8.5%	883.8	822.9	-6.9%	1,172.6	1,090.0	-7.0%	3,198.8	2,958.8	-7.5%
January		169.7	159.6	-6.0%	133.6	120.0	-10.2%	141.8	143.7	1.3%	445.2	423.3	-4.9%
	YTD	1,312.1	1,205.4	-8.1%	1,017.4	942.9	-7.3%	1,314.4	1,233.7	-6.1%	3,644.0	3,382.0	-7.2%
February		132.3	121.2	-8.4%	105.3	94.9	-9.9%	110.2	107.6	-2.3%	347.8	323.7	-6.9%
	YTD	1,444.4	1,326.6	-8.2%	1,122.7	1,037.8	-7.6%	1,424.7	1,341.4	-5.8%	3,991.8	3,705.7	-7.2%
March		133.1	124.0	-6.9%	107.9	99.4	-7.8%	113.2	110.3	-2.5%	354.2	333.8	-5.8%
	YTD	1,577.6	1,450.6	-8.0%	1,230.6	1,137.2	-7.6%	1,537.9	1,451.7	-5.6%	4,346.0	4,039.5	-7.1%
April		129.0	123.7	-4.1%	116.4	105.7	-9.2%	112.0	110.6	-1.3%	357.5	340.1	-4.9%
	YTD	1,706.6	1,574.3	-7.8%	1,347.0	1,242.9	-7.7%	1,649.9	1,562.3	-5.3%	4,703.5	4,379.5	-6.9%
May		128.9	129.1	0.1%	129.2	123.4	-4.5%	131.1	135.7	3.5%	389.3	388.2	-0.3%
	YTD	1,835.6	1,703.4	-7.2%	1,476.2	1,366.3	-7.4%	1,781.0	1,698.0	-4.7%	5,092.8	4,767.7	-6.4%
June		108.7	112.6	3.5%	116.2	111.9	-3.7%	147.0	148.8	1.3%	371.9	373.3	0.4%
	YTD	1,944.3	1,816.0	-6.6%	1,592.4	1,478.2	-7.2%	1,928.0	1,846.9	-4.2%	5,464.7	5,141.0	-5.9%
Total		1,944.3	1,816.0		1,592.4	1,478.2		1,928.0	1,846.9		5,464.7	5,141.0	

Produced by Trade and Strategy, Dairy Australia Limited, Source: Dairy Manufacturers

Please Note: These reports contain data based on a combination of voluntary direct reporting from processors, and data sourced from government agencies. Retrospective adjustments are possible if new or revised data is received.

Milk production report (Litres '000s)

Victoria

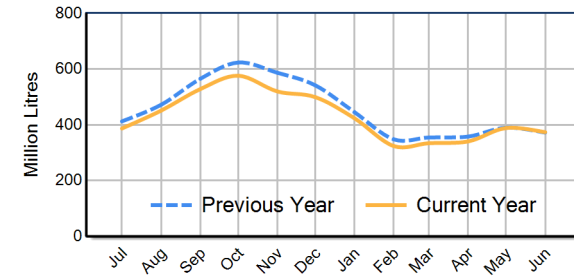


		Eastern	Northern	Western	VIC
Month	June-21	118,909	126,052	161,058	406,019
	June-22	108,722	116,217	146,974	371,913
	June-23	112,574	111,927	148,845	373,346
	% change	3.5%	-3.7%	1.3%	0.4%
Region Share	June-22	29.2%	31.2%	39.5%	100.0%
	June-23	30.2%	30.0%	39.9%	100.0%
Year To Date		Eastern	Northern	Western	VIC
	2020/2021	2,022,109	1,633,974	1,994,708	5,650,790
	2021/2022	1,944,272	1,592,407	1,928,021	5,464,700
	2022/2023	1,815,995	1,478,179	1,846,866	5,141,041
	% change	-6.6%	-7.2%	-4.2%	-5.9%
Region Share	2021/2022	35.6%	29.1%	35.3%	100.0%
	2022/2023	35.3%	28.8%	35.9%	100.0%
Total		Eastern	Northern	Western	VIC
	2021/2022	1,944,272	1,592,407	1,928,021	5,464,700
	Region Share	35.6%	29.1%	35.3%	100.0%

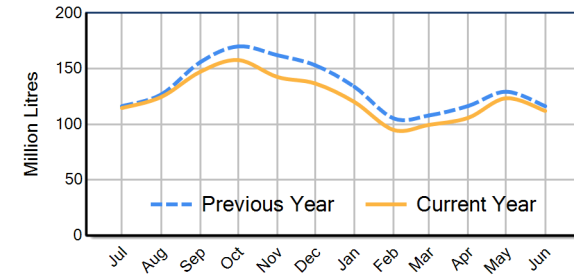
Average Milkfat & Protein (%)

		Eastern	Northern	Western	VIC
Milkfat	June-21	4.40%	4.36%	4.25%	4.33%
	June-22	4.50%	4.42%	4.43%	4.45%
	June-23	4.42%	4.37%	4.38%	4.39%
	% change 22/23	-1.9%	-1.0%	-1.2%	-1.3%
Protein		Eastern	Northern	Western	VIC
	June-21	3.54%	3.48%	3.39%	3.46%
	June-22	3.57%	3.52%	3.41%	3.49%
	June-23	3.57%	3.49%	3.44%	3.49%
	% change 22/23	-0.1%	-0.9%	1.0%	0.1%

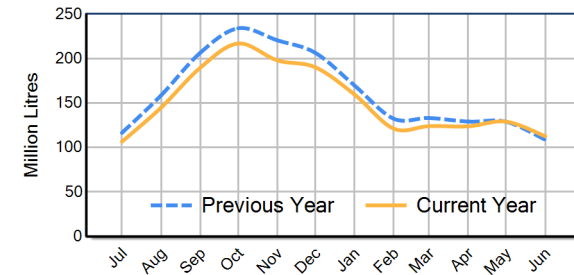
VIC Milk Production - Total Regions



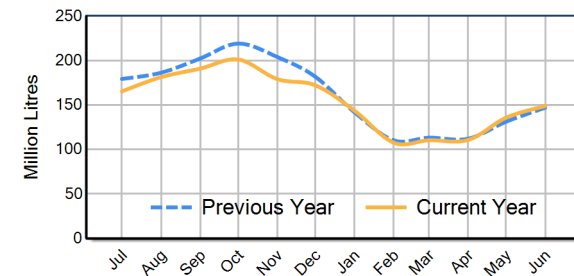
VIC Milk Production - Northern Region



VIC Milk Production - Eastern Region



VIC Milk Production - Western Region



Please note: These reports contain data based on a combination of voluntary direct reporting from processors, and data sourced from government agencies. Retrospective adjustments are possible if new or revised data is received.