

Victoria Milk Production

23/24 by Region

(Million Litres)



		Eastern			Northern			Western			Victoria		
		22/23	23/24	Var %	22/23	23/24	Var %	22/23	23/24	Var %	22/23	23/24	Var %
July		106.4	108.7	2.1%	114.6	110.7	-3.4%	165.4	157.7	-4.7%	386.4	377.0	-2.4%
	<i>YTD</i>	<i>106.4</i>	<i>108.7</i>	<i>2.1%</i>	<i>114.6</i>	<i>110.7</i>	<i>-3.4%</i>	<i>165.4</i>	<i>157.7</i>	<i>-4.7%</i>	<i>386.4</i>	<i>377.0</i>	<i>-2.4%</i>
August		144.8			124.4			181.4			450.6		
	<i>YTD</i>	<i>251.3</i>			<i>239.0</i>			<i>346.7</i>			<i>837.0</i>		
September		189.7			147.2			190.9			527.7		
	<i>YTD</i>	<i>441.0</i>			<i>386.2</i>			<i>537.6</i>			<i>1,364.7</i>		
October		216.8			157.7			201.2			575.7		
	<i>YTD</i>	<i>657.8</i>			<i>543.8</i>			<i>738.8</i>			<i>1,940.4</i>		
November		197.8			142.5			179.0			519.3		
	<i>YTD</i>	<i>855.6</i>			<i>686.3</i>			<i>917.8</i>			<i>2,459.8</i>		
December		190.2			136.6			172.2			499.0		
	<i>YTD</i>	<i>1,045.8</i>			<i>822.9</i>			<i>1,090.0</i>			<i>2,958.8</i>		
January		159.6			120.0			143.7			423.3		
	<i>YTD</i>	<i>1,205.4</i>			<i>942.9</i>			<i>1,233.7</i>			<i>3,382.0</i>		
February		121.2			94.9			107.6			323.7		
	<i>YTD</i>	<i>1,326.6</i>			<i>1,037.8</i>			<i>1,341.4</i>			<i>3,705.7</i>		
March		124.0			99.4			110.3			333.8		
	<i>YTD</i>	<i>1,450.6</i>			<i>1,137.2</i>			<i>1,451.7</i>			<i>4,039.5</i>		
April		123.7			105.7			110.6			340.1		
	<i>YTD</i>	<i>1,574.3</i>			<i>1,242.9</i>			<i>1,562.3</i>			<i>4,379.5</i>		
May		129.1			123.4			135.7			388.2		
	<i>YTD</i>	<i>1,703.4</i>			<i>1,366.3</i>			<i>1,698.0</i>			<i>4,767.7</i>		
June		112.6			111.9			148.8			373.3		
	<i>YTD</i>	<i>1,816.0</i>			<i>1,478.2</i>			<i>1,846.9</i>			<i>5,141.0</i>		
Total		1,816.0			1,478.2			1,846.9			5,141.0		

Produced by Trade and Strategy, Dairy Australia Limited, Source: Dairy Manufacturers

Please Note: These reports contain data based on a combination of voluntary direct reporting from processors, and data sourced from government agencies. Retrospective adjustments are possible if new or revised data is received.

Milk production report (Litres '000s)

Victoria

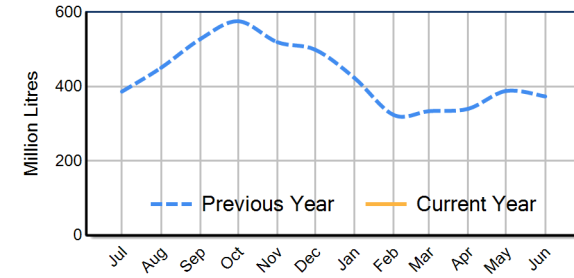


		Eastern	Northern	Western	VIC
Month	July-21	116,392	116,223	179,252	411,866
	July-22	106,439	114,552	165,382	386,374
	July-23	108,661	110,691	157,668	377,020
	% change	2.1%	-3.4%	-4.7%	-2.4%
Region Share	July-22	27.5%	29.6%	42.8%	100.0%
	July-23	28.8%	29.4%	41.8%	100.0%
Year To Date		Eastern	Northern	Western	VIC
	2021/2022	116,392	116,223	179,252	411,866
	2022/2023	106,439	114,552	165,382	386,374
	2023/2024	108,661	110,691	157,668	377,020
	% change	2.1%	-3.4%	-4.7%	-2.4%
Region Share	2022/2023	27.5%	29.6%	42.8%	100.0%
	2023/2024	28.8%	29.4%	41.8%	100.0%
Total		Eastern	Northern	Western	VIC
	2022/2023	1,815,995	1,478,179	1,846,866	5,141,041
	Region Share	35.3%	28.8%	35.9%	100.0%

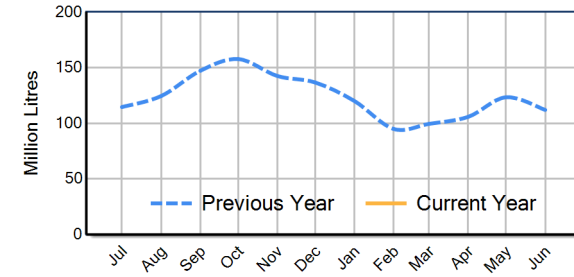
Average Milkfat & Protein (%)

		Eastern	Northern	Western	VIC
Milkfat	July-21	4.21%	4.23%	4.18%	4.20%
	July-22	4.20%	4.19%	4.22%	4.20%
	July-23	4.28%	4.18%	4.30%	4.26%
	% change 23/24	2.0%	-0.4%	2.0%	1.3%
Protein		Eastern	Northern	Western	VIC
	July-21	3.48%	3.46%	3.40%	3.44%
	July-22	3.50%	3.51%	3.33%	3.43%
	July-23	3.57%	3.48%	3.41%	3.48%
	% change 23/24	2.0%	-1.1%	2.4%	1.3%

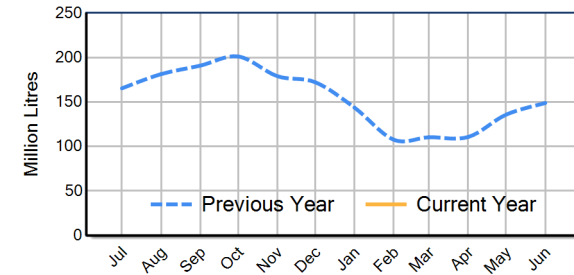
VIC Milk Production - Total Regions



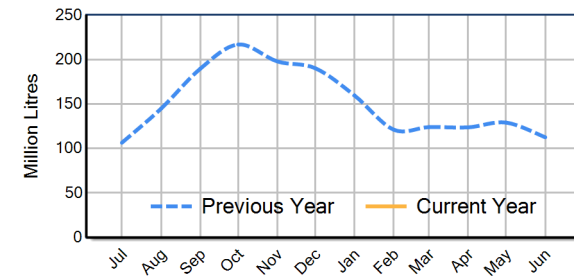
VIC Milk Production - Northern Region



VIC Milk Production - Western Region



VIC Milk Production - Eastern Region



Please note: These reports contain data based on a combination of voluntary direct reporting from processors, and data sourced from government agencies. Retrospective adjustments are possible if new or revised data is received.