

New South Wales Milk Production

22/23 by Region

(Million Litres)



		Inland/Central			North Coast			Southern			New South Wales		
		21/22	22/23	Var %	21/22	22/23	Var %	21/22	22/23	Var %	21/22	22/23	Var %
July		22.6	20.1	-11.0%	25.0	20.3	-18.6%	44.8	40.3	-9.9%	92.3	80.7	-12.6%
	YTD	22.6	20.1	-11.0%	25.0	20.3	-18.6%	44.8	40.3	-9.9%	92.3	80.7	-12.6%
August		22.7	20.3	-10.5%	27.4	21.6	-21.2%	48.4	43.6	-9.8%	98.4	85.5	-13.1%
	YTD	45.3	40.4	-10.8%	52.3	41.9	-20.0%	93.2	84.0	-9.9%	190.8	166.3	-12.9%
September		23.1	20.6	-11.0%	28.3	24.0	-15.1%	48.9	45.1	-7.7%	100.2	89.6	-10.5%
	YTD	68.4	60.9	-10.8%	80.6	65.9	-18.3%	142.0	129.1	-9.1%	291.0	255.9	-12.1%
October		23.6	20.9	-11.6%	29.5	25.0	-15.3%	51.9	46.9	-9.6%	105.0	92.8	-11.6%
	YTD	92.0	81.8	-11.0%	110.1	90.9	-17.5%	193.9	176.0	-9.2%	396.0	348.7	-11.9%
November		22.9	19.4	-15.2%	27.6	22.6	-18.2%	49.0	44.5	-9.3%	99.5	86.4	-13.1%
	YTD	114.9	101.3	-11.9%	137.6	113.4	-17.6%	242.9	220.4	-9.2%	495.4	435.1	-12.2%
December		22.4	20.1	-10.3%	25.8	21.9	-15.0%	48.4	44.2	-8.8%	96.7	86.2	-10.8%
	YTD	137.3	121.4	-11.6%	163.5	135.3	-17.2%	291.3	264.6	-9.2%	592.1	521.3	-11.9%
January		21.5	19.7	-8.6%	24.1	20.4	-15.5%	45.4	41.0	-9.6%	91.0	81.0	-11.0%
	YTD	158.9	141.1	-11.2%	187.6	155.7	-17.0%	336.7	305.6	-9.2%	683.1	602.4	-11.8%
February		19.1	18.2	-4.7%	22.0	18.8	-14.9%	38.7	35.9	-7.1%	79.8	72.9	-8.7%
	YTD	178.0	159.3	-10.5%	209.6	174.5	-16.8%	375.3	341.5	-9.0%	762.9	675.3	-11.5%
March		20.2	19.8	-1.8%	20.3	19.7	-2.9%	40.2	38.8	-3.4%	80.7	78.4	-2.9%
	YTD	198.1	179.1	-9.6%	229.9	194.2	-15.5%	415.5	380.4	-8.5%	843.6	753.6	-10.7%
April		19.4	19.7	1.2%	17.5	18.8	7.2%	37.4	37.3	-0.1%	74.4	75.8	1.9%
	YTD	217.6	198.7	-8.7%	247.5	213.0	-13.9%	452.9	417.7	-7.8%	918.0	829.4	-9.6%
May		20.6	21.5	4.0%	17.3	19.4	12.5%	38.8	39.1	0.7%	76.7	80.0	4.3%
	YTD	238.2	220.2	-7.6%	264.8	232.4	-12.2%	491.7	456.8	-7.1%	994.7	909.4	-8.6%
June		21.3			17.8			38.7			77.8		
	YTD	259.5			282.6			530.4			1,072.4		
Total		259.5			282.6			530.4			1,072.4		

Produced by Trade and Strategy, Dairy Australia Limited, Source: Dairy Manufacturers

Please Note: These reports contain data based on a combination of voluntary direct reporting from processors, and data sourced from government agencies. Retrospective adjustments are possible if new or revised data is received.

Milk production report (Litres '000s)

New South Wales

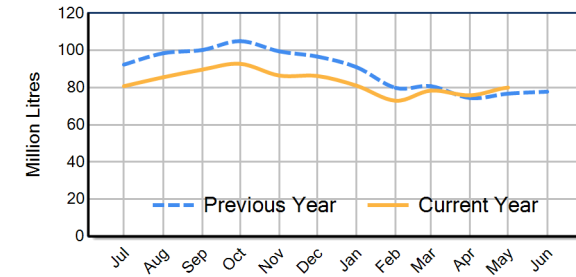


		Inland/Central	North Coast	Southern	NSW
Month	May-21	21,652	20,045	43,878	85,575
	May-22	20,636	17,287	38,790	76,713
	May-23	21,470	19,442	39,075	79,987
	% change	4.0%	12.5%	0.7%	4.3%
Region Share	May-22	26.9%	22.5%	50.6%	100.0%
	May-23	26.8%	24.3%	48.9%	100.0%
		Inland/Central	North Coast	Southern	NSW
Year To Date	2020/2021	236,672	254,537	497,597	988,807
	2021/2022	238,201	264,765	491,704	994,670
	2022/2023	220,208	232,449	456,761	909,417
	% change	-7.6%	-12.2%	-7.1%	-8.6%
Region Share	2021/2022	23.9%	26.6%	49.4%	100.0%
	2022/2023	24.2%	25.6%	50.2%	100.0%
		Inland/Central	North Coast	Southern	NSW
Total	2021/2022	259,480	282,553	530,391	1,072,424
	Region Share	24.2%	26.3%	49.5%	100.0%

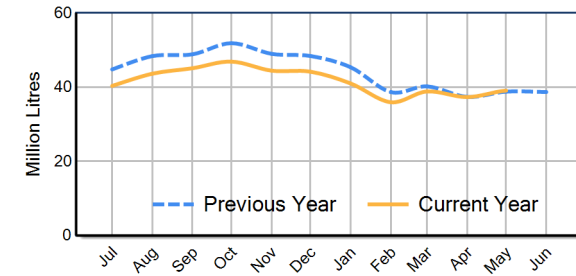
Average Milkfat & Protein (%)

		Inland/Central	North Coast	Southern	NSW
Milkfat	May-21	4.08%	4.29%	4.29%	4.24%
	May-22	4.13%	4.30%	4.26%	4.23%
	May-23	4.08%	4.28%	4.31%	4.24%
	% change 22/23	-1.2%	-0.4%	1.2%	0.2%
		Inland/Central	North Coast	Southern	NSW
Protein	May-21	3.36%	3.40%	3.47%	3.43%
	May-22	3.38%	3.36%	3.47%	3.42%
	May-23	3.41%	3.48%	3.53%	3.48%
	% change 22/23	0.7%	3.6%	1.6%	1.8%

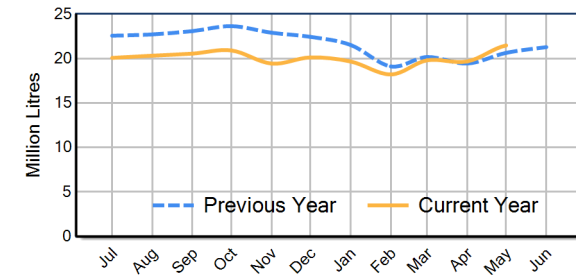
NSW Milk Production - Total Regions



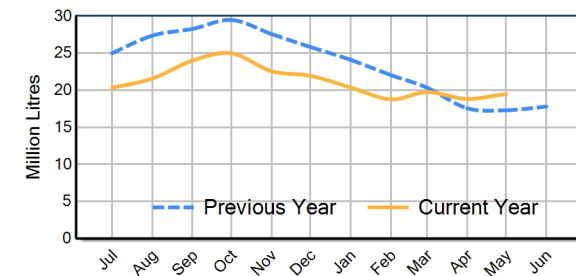
NSW Milk Production - Southern Region



NSW Milk Production - Inland/Central Region



NSW Milk Production - North Coast Region



Please note: These reports contain data based on a combination of voluntary direct reporting from processors, and data sourced from government agencies. Retrospective adjustments are possible if new or revised data is received.