

# New South Wales Milk Production

## 22/23 by Region

### (Million Litres)



		Inland/Central			North Coast			Southern			New South Wales		
		21/22	22/23	Var %	21/22	22/23	Var %	21/22	22/23	Var %	21/22	22/23	Var %
July		22.6	20.1	-11.0%	25.0	20.3	-18.6%	44.8	40.3	-9.9%	92.3	80.7	-12.6%
	YTD	22.6	20.1	-11.0%	25.0	20.3	-18.6%	44.8	40.3	-9.9%	92.3	80.7	-12.6%
August		22.7	20.3	-10.5%	27.4	21.6	-21.2%	48.4	43.6	-9.8%	98.4	85.5	-13.1%
	YTD	45.3	40.4	-10.8%	52.3	41.9	-20.0%	93.2	84.0	-9.9%	190.8	166.3	-12.9%
September		23.1	20.6	-11.0%	28.3	24.0	-15.1%	48.9	45.1	-7.7%	100.2	89.6	-10.5%
	YTD	68.4	60.9	-10.8%	80.6	65.9	-18.3%	142.0	129.1	-9.1%	291.0	255.9	-12.1%
October		23.6	20.9	-11.6%	29.5	25.0	-15.3%	51.9	46.9	-9.6%	105.0	92.8	-11.6%
	YTD	92.0	81.8	-11.0%	110.1	90.9	-17.5%	193.9	176.0	-9.2%	396.0	348.7	-11.9%
November		22.9	19.4	-15.2%	27.6	22.6	-18.2%	49.0	44.5	-9.3%	99.5	86.4	-13.1%
	YTD	114.9	101.3	-11.9%	137.6	113.4	-17.6%	242.9	220.4	-9.2%	495.4	435.1	-12.2%
December		22.4	20.1	-10.3%	25.8	21.9	-15.0%	48.4	44.2	-8.8%	96.7	86.2	-10.8%
	YTD	137.3	121.4	-11.6%	163.5	135.3	-17.2%	291.3	264.6	-9.2%	592.1	521.3	-11.9%
January		21.5	19.7	-8.6%	24.1	20.4	-15.5%	45.4	41.0	-9.6%	91.0	81.0	-11.0%
	YTD	158.9	141.1	-11.2%	187.6	155.7	-17.0%	336.7	305.6	-9.2%	683.1	602.4	-11.8%
February		19.1	18.2	-4.7%	22.0	18.8	-14.9%	38.7	35.9	-7.1%	79.8	72.9	-8.7%
	YTD	178.0	159.3	-10.5%	209.6	174.5	-16.8%	375.3	341.5	-9.0%	762.9	675.3	-11.5%
March		20.2	19.8	-1.8%	20.3	19.7	-2.9%	40.2	38.8	-3.4%	80.7	78.4	-2.9%
	YTD	198.1	179.1	-9.6%	229.9	194.2	-15.5%	415.5	380.4	-8.5%	843.6	753.6	-10.7%
April		19.4	19.7	1.2%	17.5	18.8	7.2%	37.4	37.3	-0.1%	74.4	75.8	1.9%
	YTD	217.6	198.7	-8.7%	247.5	213.0	-13.9%	452.9	417.7	-7.8%	918.0	829.4	-9.6%
May		20.6	21.5	4.0%	17.3	19.4	12.5%	38.8	39.1	0.7%	76.7	80.0	4.3%
	YTD	238.2	220.2	-7.6%	264.8	232.4	-12.2%	491.7	456.8	-7.1%	994.7	909.4	-8.6%
June		21.3	21.5	1.2%	17.8	19.6	10.3%	38.7	39.3	1.6%	77.8	80.4	3.5%
	YTD	259.5	241.7	-6.8%	282.6	252.1	-10.8%	530.4	496.1	-6.5%	1,072.4	989.9	-7.7%
<b>Total</b>		<b>259.5</b>	<b>241.7</b>		<b>282.6</b>	<b>252.1</b>		<b>530.4</b>	<b>496.1</b>		<b>1,072.4</b>	<b>989.9</b>	

Produced by Trade and Strategy, Dairy Australia Limited, Source: Dairy Manufacturers

Please Note: These reports contain data based on a combination of voluntary direct reporting from processors, and data sourced from government agencies. Retrospective adjustments are possible if new or revised data is received.

# Milk production report (Litres '000s)

## New South Wales

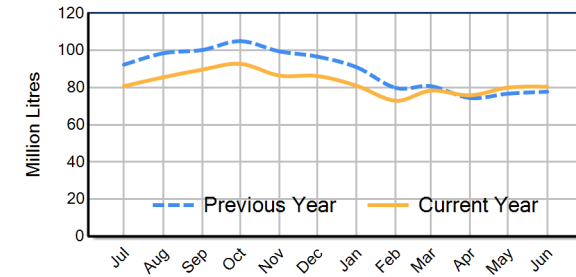


		Inland/Central	North Coast	Southern	NSW
Month	June-21	21,957	20,996	43,685	86,638
	June-22	21,279	17,788	38,687	77,754
	June-23	21,535	19,614	39,297	80,446
	<b>% change</b>	<b>1.2%</b>	<b>10.3%</b>	<b>1.6%</b>	<b>3.5%</b>
Region Share	June-22	27.4%	22.9%	49.8%	100.0%
	June-23	26.8%	24.4%	48.8%	100.0%
		Inland/Central	North Coast	Southern	NSW
Year To Date	2020/2021	258,630	275,533	541,282	1,075,444
	2021/2022	259,480	282,553	530,391	1,072,424
	2022/2023	241,743	252,063	496,057	989,863
	<b>% change</b>	<b>-6.8%</b>	<b>-10.8%</b>	<b>-6.5%</b>	<b>-7.7%</b>
Region Share	2021/2022	24.2%	26.3%	49.5%	100.0%
	2022/2023	24.4%	25.5%	50.1%	100.0%
		Inland/Central	North Coast	Southern	NSW
Total	2021/2022	259,480	282,553	530,391	1,072,424
	<b>Region Share</b>	<b>24.2%</b>	<b>26.3%</b>	<b>49.5%</b>	<b>100.0%</b>

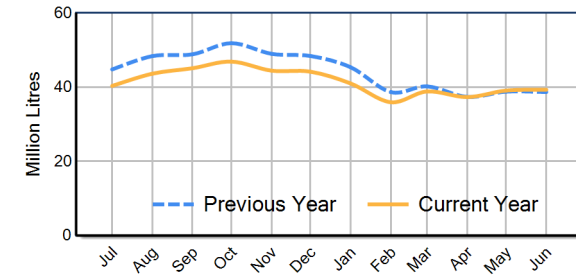
## Average Milkfat & Protein (%)

		Inland/Central	North Coast	Southern	NSW
Milkfat	June-21	4.07%	4.20%	4.26%	4.20%
	June-22	4.07%	4.25%	4.27%	4.21%
	June-23	4.10%	4.24%	4.28%	4.22%
	<b>% change 22/23</b>	<b>0.9%</b>	<b>-0.4%</b>	<b>0.3%</b>	<b>0.3%</b>
		Inland/Central	North Coast	Southern	NSW
Protein	June-21	3.35%	3.42%	3.47%	3.43%
	June-22	3.40%	3.42%	3.48%	3.44%
	June-23	3.39%	3.47%	3.48%	3.45%
	<b>% change 22/23</b>	<b>-0.3%</b>	<b>1.3%</b>	<b>-0.1%</b>	<b>0.2%</b>

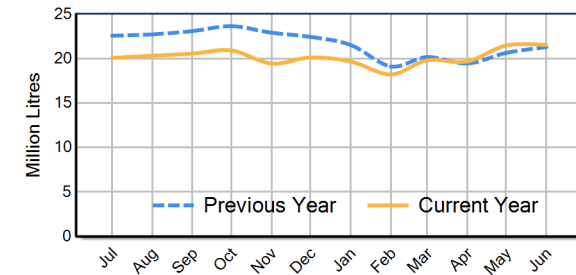
NSW Milk Production - Total Regions



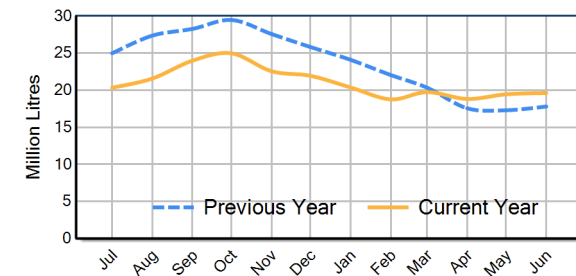
NSW Milk Production - Southern Region



NSW Milk Production - Inland/Central Region



NSW Milk Production - North Coast Region



Please note: These reports contain data based on a combination of voluntary direct reporting from processors, and data sourced from government agencies. Retrospective adjustments are possible if new or revised data is received.